

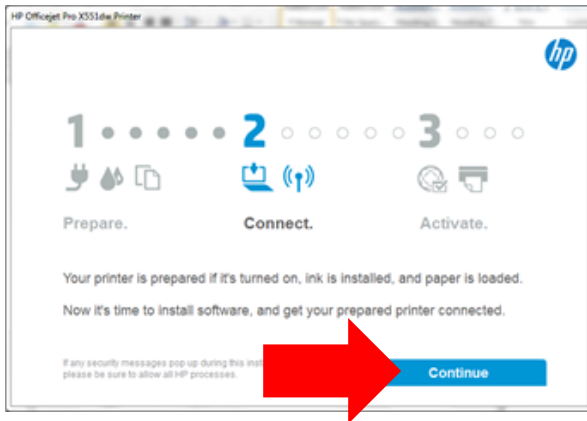
HP Officejet Pro X551 DW Printer Setup - WINDOWS

These instructions are for PC computers. Mac computers will automatically detect the printer on the network and configure print drivers. The images below were on a computer with a Windows 7 operating system. Your screen may look different, but the steps are the same.

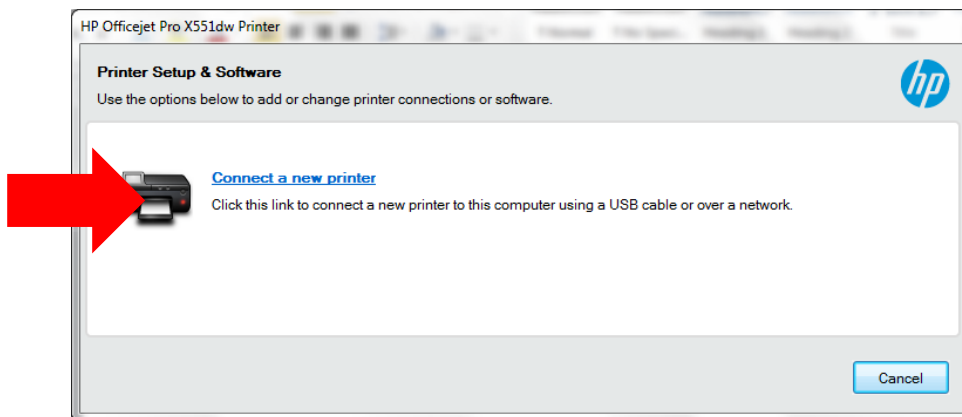
To setup the printer on a PC computer, you'll need the USB stick located on the printer table.

Instructions

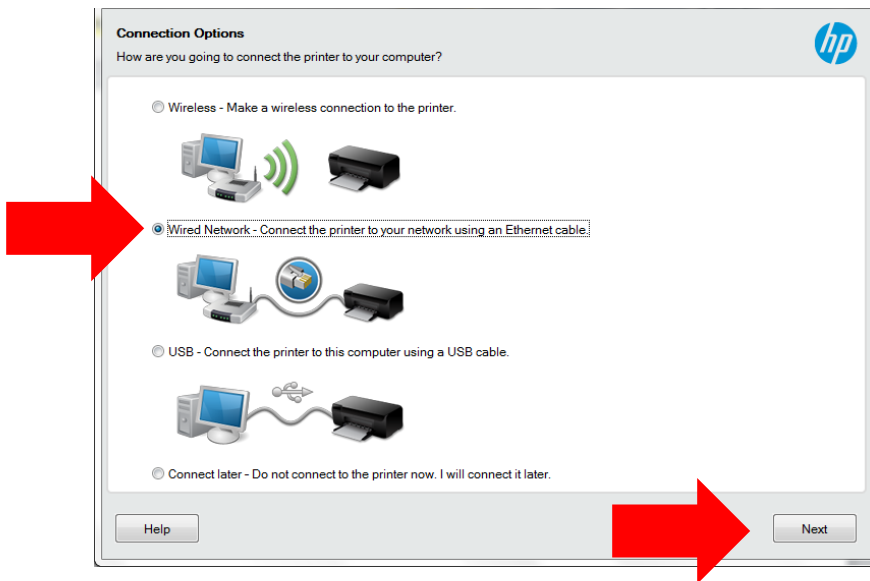
- 1) Get the USB stick on the printer table and plug it into your computer.
- 2) Open the **HP Officejet (color) folder** and double-click on **"OJX551_DW_Basicx64_188"**.
If prompted to allow changes, say "Yes". Files will extract.
- 3) When you see the screen below, click **"Continue"**.



- 4) Click on the **"Connect to a new printer"** link.



5) Strange as it may seem, choose “**Wired Network**”. Trust me*.

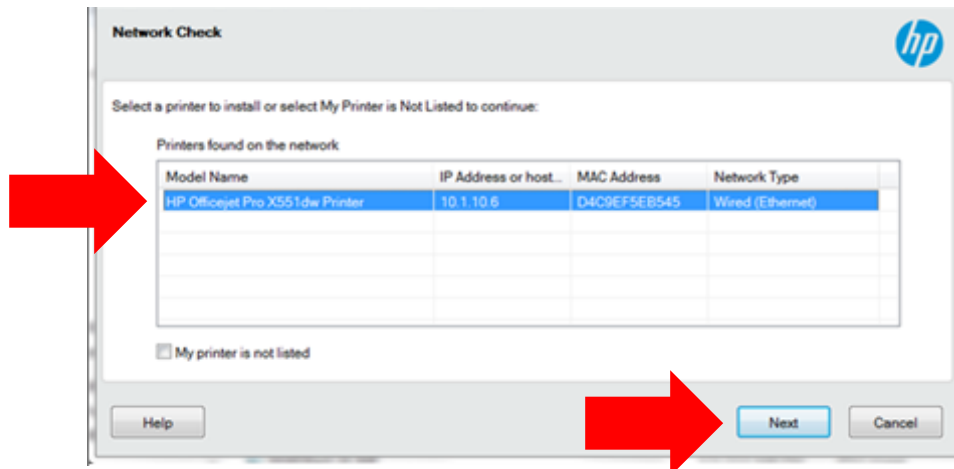


*If you must know, it’s because you are not connecting to the printer wirelessly. Your computer is connected to our network via a wireless access point, but the printer is wired into the network via an Ethernet cable.

6) When the Ethernet Connection screen shows, click **Next**.



7) Make sure **HP Officejet Pro X551dw Printer** is highlighted and click **Next**.



- 8) You'll be asked for some information about the printer. We haven't figured how to avoid these questions, so answer "In a business with 9 or fewer employees" and enter "21701" as the zip code.

HP Officejet Pro X551dw Printer

Information About Your Printer
Thank you for helping HP make better products by providing this information.

How will you primarily use this printer?

- In a home (primarily personal use).
- In a home-based business.
- In a business with 9 or fewer employees.
- In a business with 10 or more employees.

Where is the printer located?

Postal Code
21701

Printer Settings
United States
English

Edit

Next

- 9) You'll be asked to register the printer – as if you're the only user of this printer (which, of course, is not the case). Click "Skip without activating" (lower left)

Activate and register your printer

Activate all the features of your printer by creating a free **HP Connected** account.

- For more personalized care please share your name and email address with HP.
- Enjoy faster service and more efficient support, product support alerts, and more.

[Privacy Statement](#)
HP collects site and printer usage information to personalize your experience and to improve our products. [Learn More](#)

Already have an account? Sign In

First Name: [] Last Name: []
Email Address: []
Password: []
Use at least 6 characters (no spaces)
United States [v]

Send me email with HP Connected news, offers and updates.
 Yes, I have read and agree to the HP Connected Terms of Use

Create Account

[Skip without activating](#)

- 10) All done. Click "Finish"

Congratulations! Setup is complete.

Your HP Officejet Pro X551dw printer is connected and ready to print.

Click Finish to explore HP Connected and learn about getting the most from your new printer and other products and services.

Print from mobile
Get the HP iPrint Remote app to be able to:
• Setup, connect, and print to HP printers from your phone or tablet.
• Manage your printer on the go—connect to see status and find new printers.

Available on:
Download on the App Store
GET IT ON Google Play

Finish