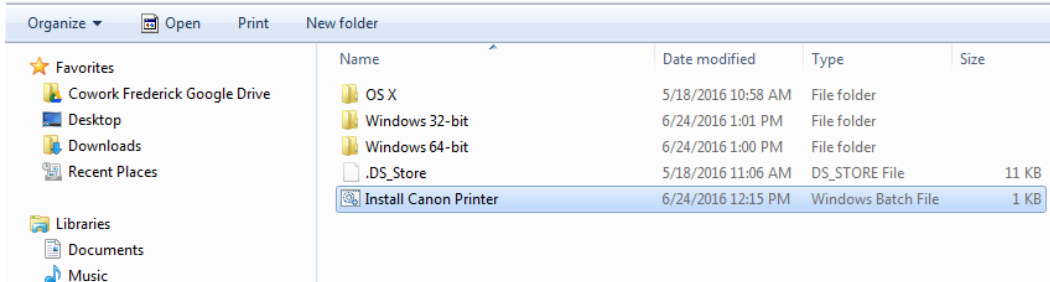


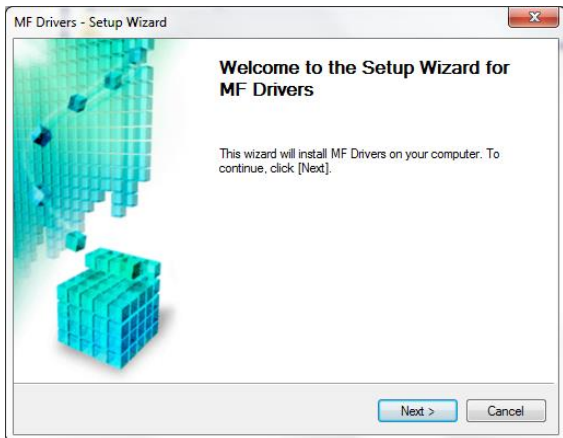
Installing Drivers for the Canon printer (black and white laser) – WINDOWS

Note: these instructions are for Windows 7. Your screens/prompts may be different.

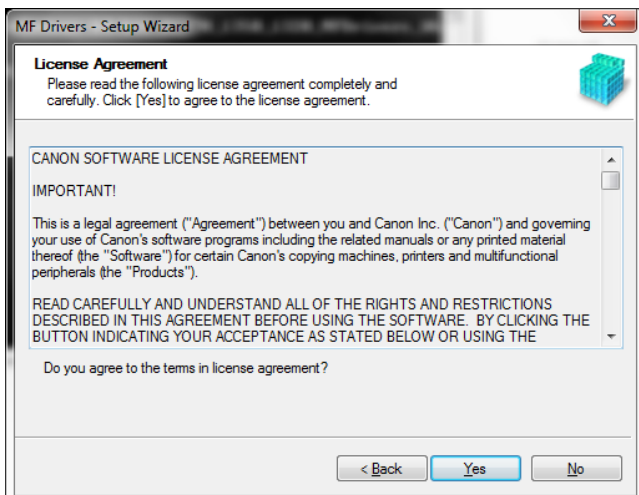
- 1) Get the USB drive from the next to the printer and insert it into your computer.
- 2) Go to the **Canon1350 MFP** folder.



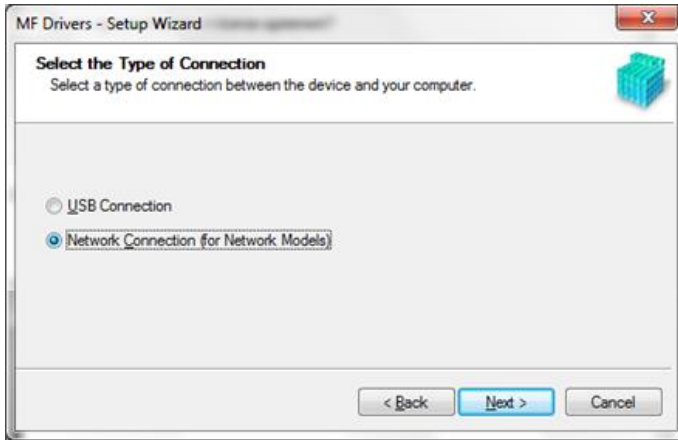
- 3) Locate the file called '**Install Canon Printer**' (double-click). You may be asked if it's OK for this program to make changes to your computer. If you are, click "Yes".
- 4) Click "Next" when prompted.



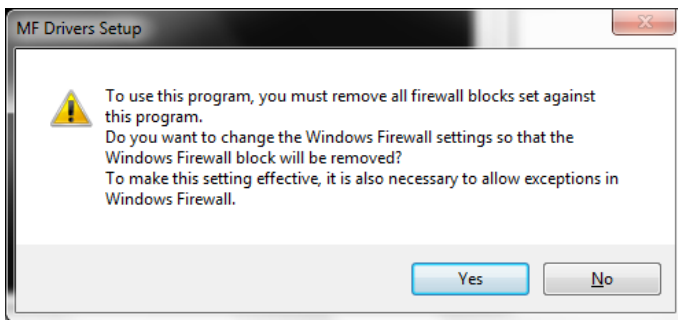
- 5) Agree to the terms.



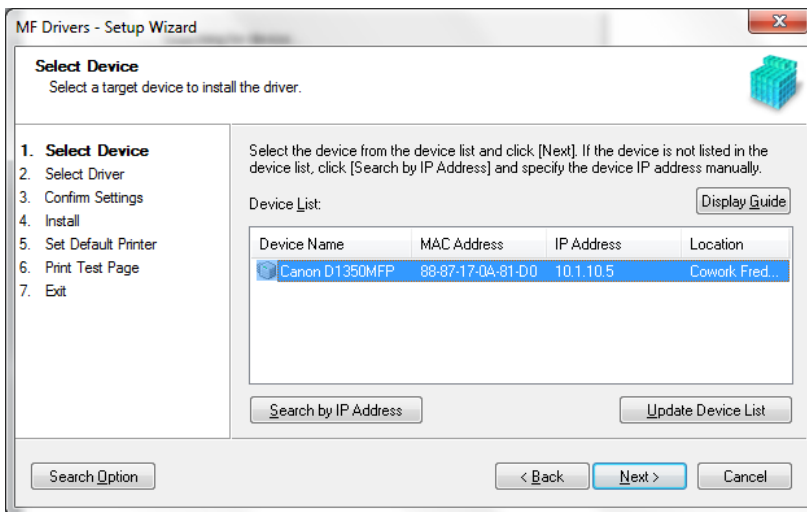
6) Choose "Network Connection" then press "Next."



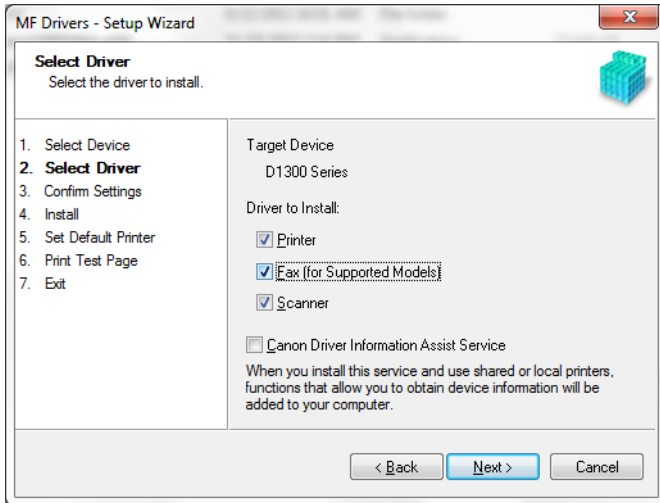
7) If you get this warning, choose "Yes".



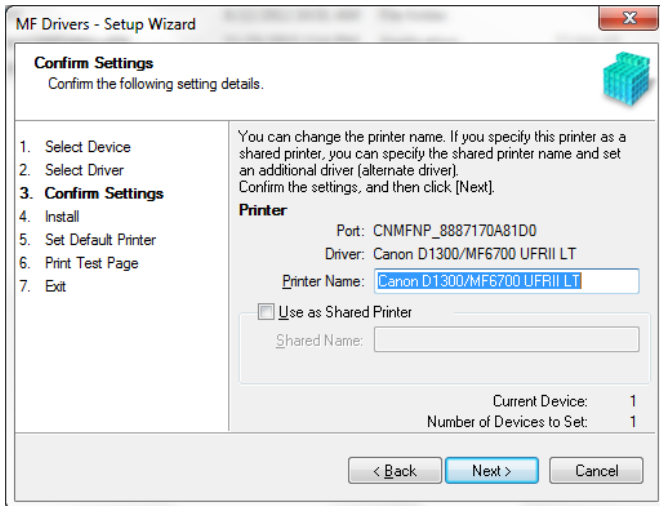
8) 7 Steps to go. With the Canon device selected, click "Next". You should see Canon D11350MFP in the Device List and it should be selected. If you don't see it, choose "Search by IP Address" and type "10.1.10.5" to find it.



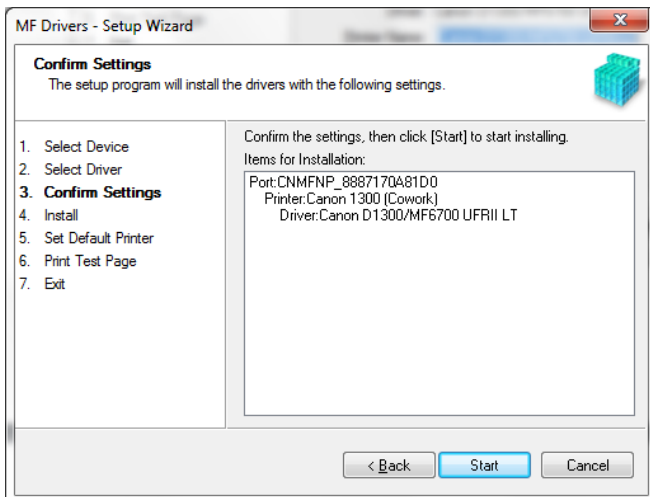
9) Choose the drivers (e.g., printer, fax) that you want to install and then click “Next”.



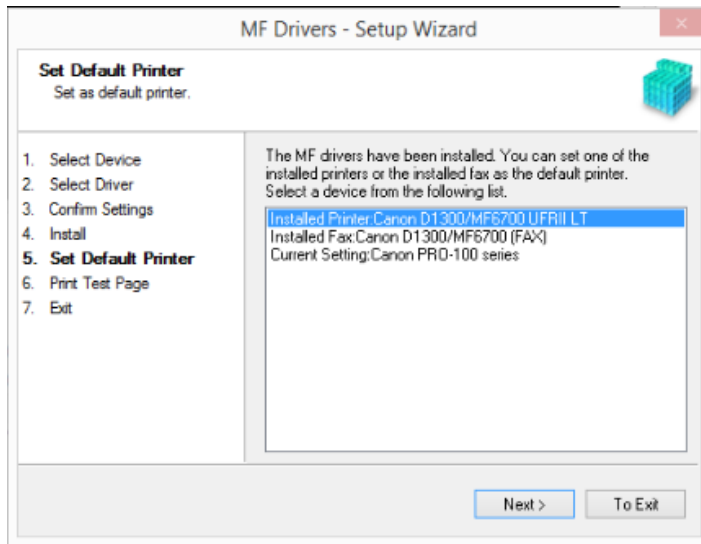
10) If desired, change the printer name. Then click “Next”.



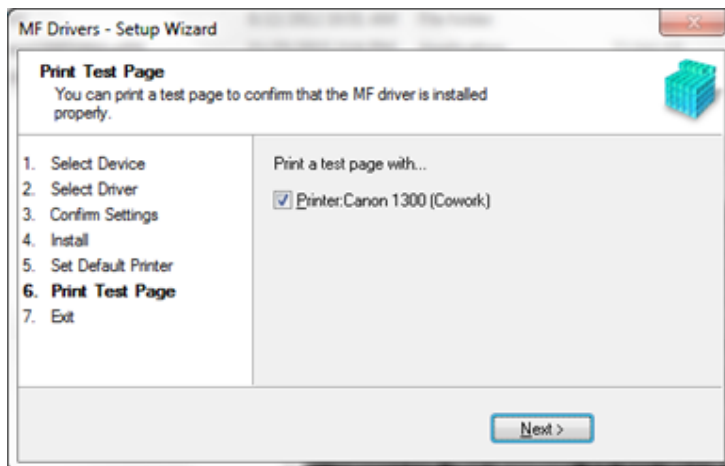
11) Press “Start”.



12) If you want, set this as your default printer when you're on the Cowork Frederick network. This choice shouldn't affect the default printer for your home or other network. Make a selection and click "Next".



13) (optional) Print a test page.



Hurrah! Pat yourself on the back. You did it!

